



## THANK YOU FOR CHOOSING RAGO FABRICATION OUR TEAM THANKS YOU FOR YOUR SUPPORT!

**FABRICATION EVERY PRODUCT WE MAKE IS MADE IN THE USA AND SUPPORTS A VETERAN OWNED BUSINESS.**

There are helpful install videos on [www.ragofabrication.com](http://www.ragofabrication.com) that guides the installer through the installation process. To find the video go to More at the top of the page / Install Help / and choose the correct video that applies.

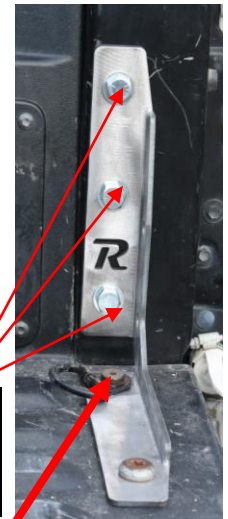
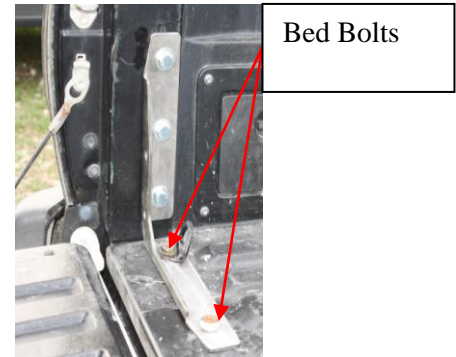
Customer service and satisfaction is our top priority (it actually is second to making kick ass products). With that being said, we will do everything we can to make sure the install process goes as smoothly as possible with the least amount of hiccups.

A couple key points to remember when installing your products:

- Get a friend to help with the installation process. An extra hand is very helpful.
- Make sure you watch the install video for your product from ***start*** to ***finish***.
- Please be patient. When you rush, mistakes happen.

Let's Get Started!

1. Remove the factory bed bolts located at the rear of the bed.
2. Install the Rago Fabrication Bed Channel Stiffener using these factory bolts but do not tighten.
3. Locate the center of the holes on the bed side of the bracket. You will then center punch the center using a spring loaded center punch or a hammer with a conventional center punch. Then set the channel stiffener aside to finish the install.
4. Remove the tail lights and then start drilling the holes in the bed side with a pilot bit. Finish drilling with a sharp ½ inch drill bit. To finish the install, deburr hole, paint the steel or silicone to prevent from rust.
5. Reinstall stiffeners and tighten down.



Remove plastic clip and spacer at the bottom of bolt

Look forward to seeing your install pics. Make sure you email them to us so we can feature you and tag @ragofabrication and hashtag #ragofabrication on social media. Oh and....if you happen to video your install, we will send you a lil “something something” if you email it over.