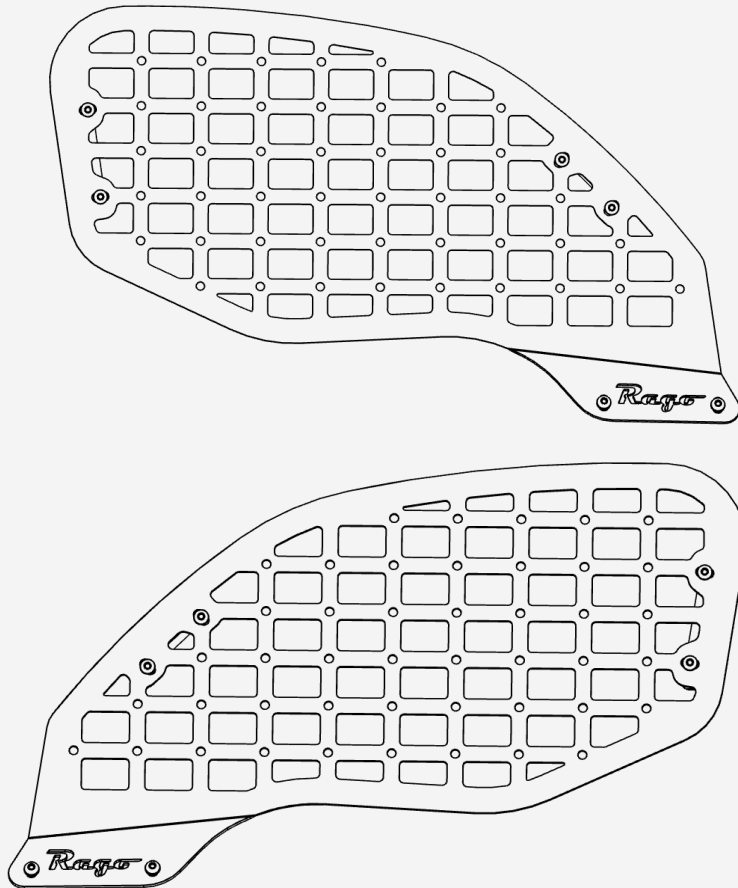


REAR MSP

2019-2024/SUBARU FORESTER

AC8502801NA



TOOLS REQUIRED

Pushpin Puller or Flathead Screwdriver

- Step Up Drill Bit
- Marker
- Tape Measure
- 5/32 Allen
- Rivet Nut Hand Tool



SKILL LEVEL

- Easy



TIME REQUIRED

- Approximately 30 Minutes

⚠️ WARNINGS/CAUTIONS BEFORE STARTING INSTALLATION ⚠️

-BEFORE YOU INSTALL THIS KIT-

Read and understand all instructions, warnings, cautions, & notes contained in this installation instruction guide. Consult your vehicle owner's manual for proper disconnection of electrical and lifting of vehicle if required for installation of this product.

This install may require some technical skills and knowledge of basic mechanical work. If you do not feel that you are capable of performing this install please take this product to a trained professional.

After reading this guide please contact us with any questions or concerns before installing product.

Customer Service: 830-896-7571

Rago Fabrication is **not** responsible for any bodily injury or harm to you or your vehicle as a result of an improper install.

Proper installation of this kit required knowledge of the factory recommended procedures for removal and installation of original equipment components.

We recommend that the factory shop manual and any special tools needed to service your vehicle be on hand during the installation. Installation of this kit without proper knowledge of the factory recommended procedures may affect the

performance of these components and the safety of the vehicle.

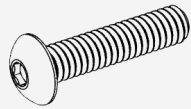
Inspect all contents of this package to make sure product is not damaged and all installation hardware has been included. If parts are missing from kit, please be prepared to provide the following information:

1. Name of purchase location
2. Bar Code on side of box
3. Date above bar code
4. Date inside box cover

ALWAYS WEAR EYE PROTECTION WHEN OPERATING POWER TOOLS

HARDWARE

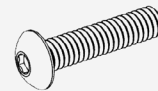
A.



1/4-20 X 3/4" BUTTON HEAD BOLT

QTY: 12

A1.



1/4-20 X 5/8" BUTTON HEAD BOLT

QTY: 8

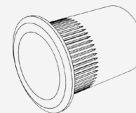
A2.



1/4-20 X 3/4" BUTTON HEAD BOLT

QTY: 20

A3.



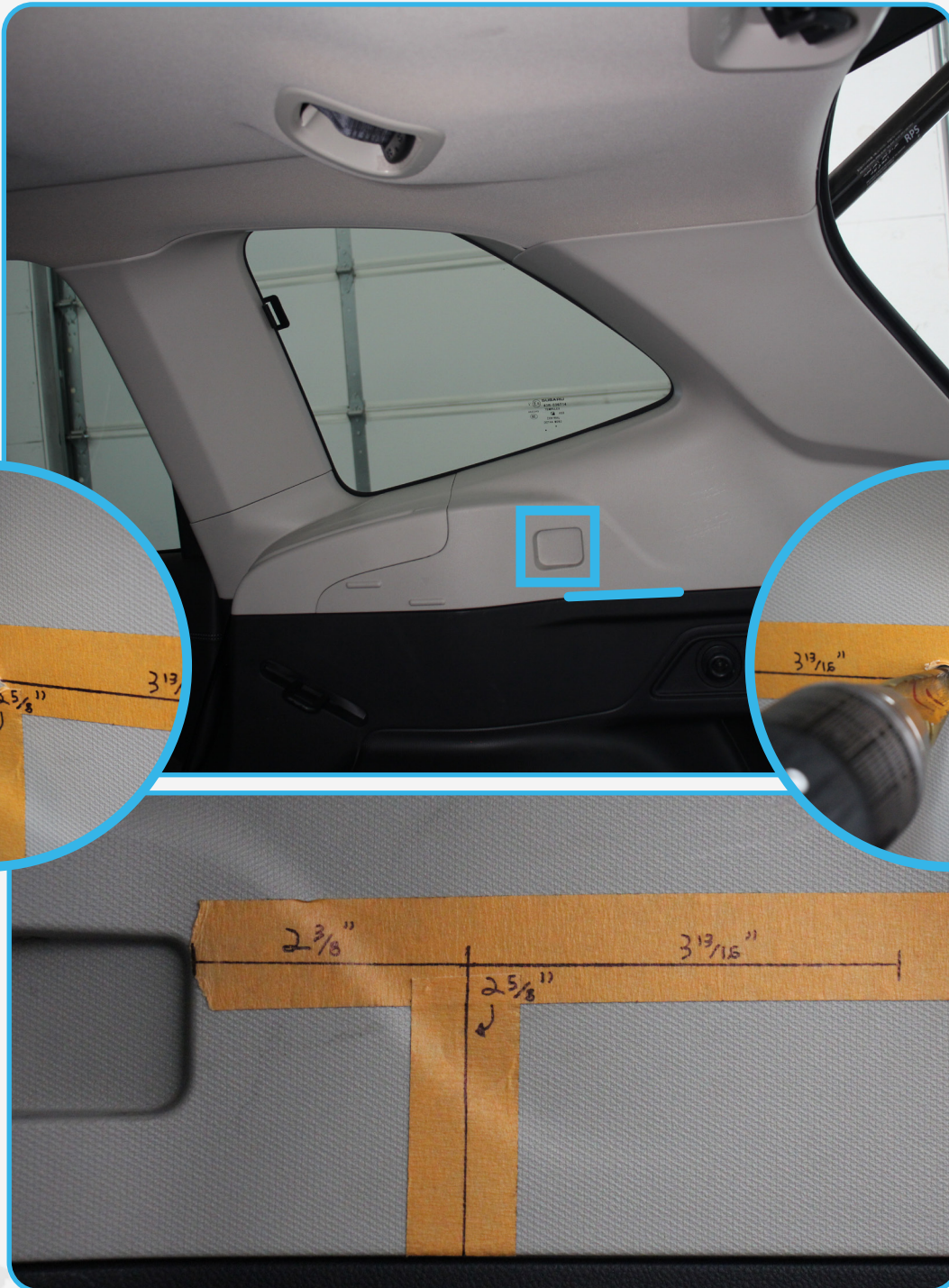
1/4-20 X 3/4" BUTTON HEAD BOLT

QTY: 12



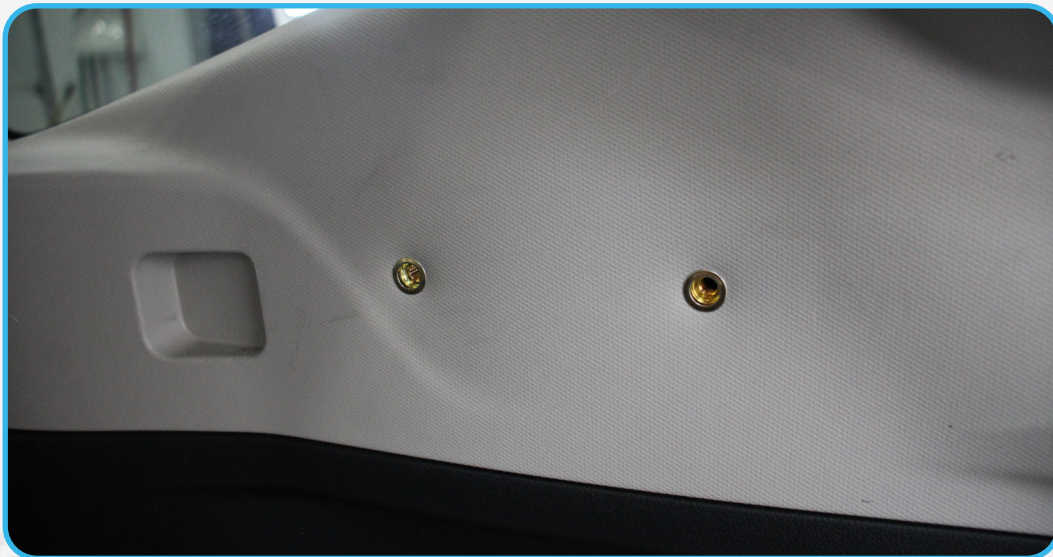
□ STEP 1

Measure 2-3/8" back from the square indent indicated below, Next measure up from the bottom of the plastic 2-5/8". The intersection will be your first hole, from that intersection measure over 3-13/16 for your second mounting hole. Then using a (Step Up Bit) to drill out to a 7/16 hole.



□ STEP 2

Install the provided rivet nuts (A3) into the holes drilled in **step 1**.



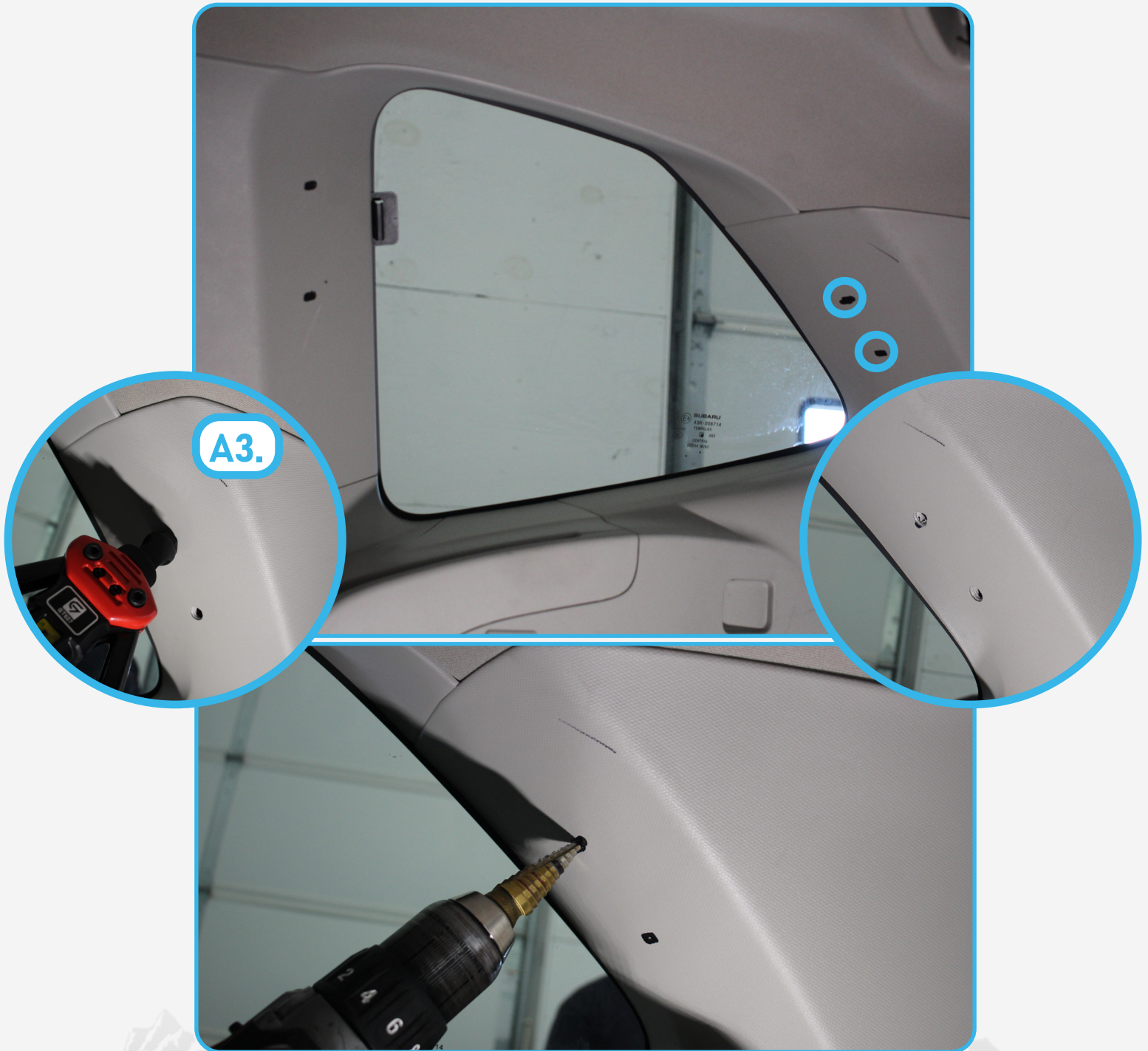
□ STEP 3

Loosely install the provided mounting brackets to the MSP with the provided 1/4" hardware (A1, A2) using a (5/32 allen). Then hold it up in the window to mark the mounting holes using a marker.



□ STEP 4

Using a (Step Up Drill Bit) drill the holes marked in **step 3** out to a 7/16 hole. Then using the provided rivet nuts (A2) install into the holes indicated below using a (Rivet Nut Hand Tool).



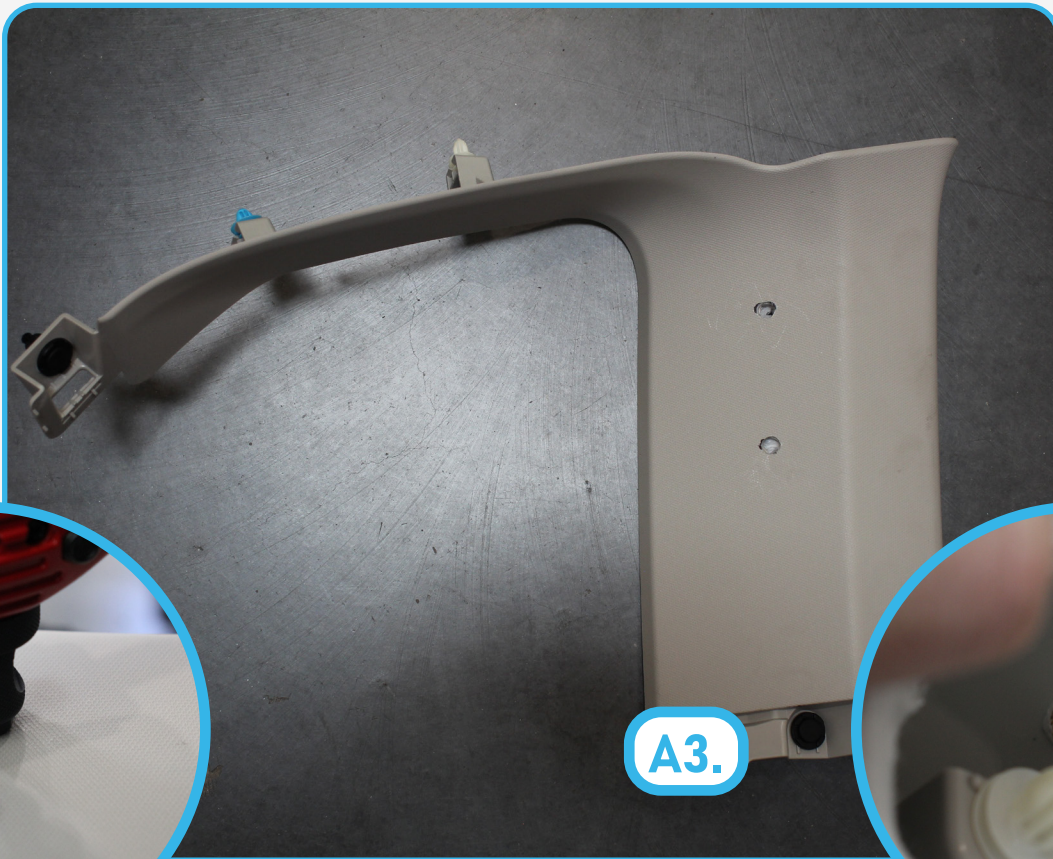
□ STEP 5

Remove the plastic starting from the passenger doors by prying outward. Using a (Fastener Removal Tool) remove the push pins shown below.



□ STEP 6

Install the provided rivet nut (A3) into the removed plastic as shown below. Then reinstall the plastic piece following **step 5** in reverse order.



A3.



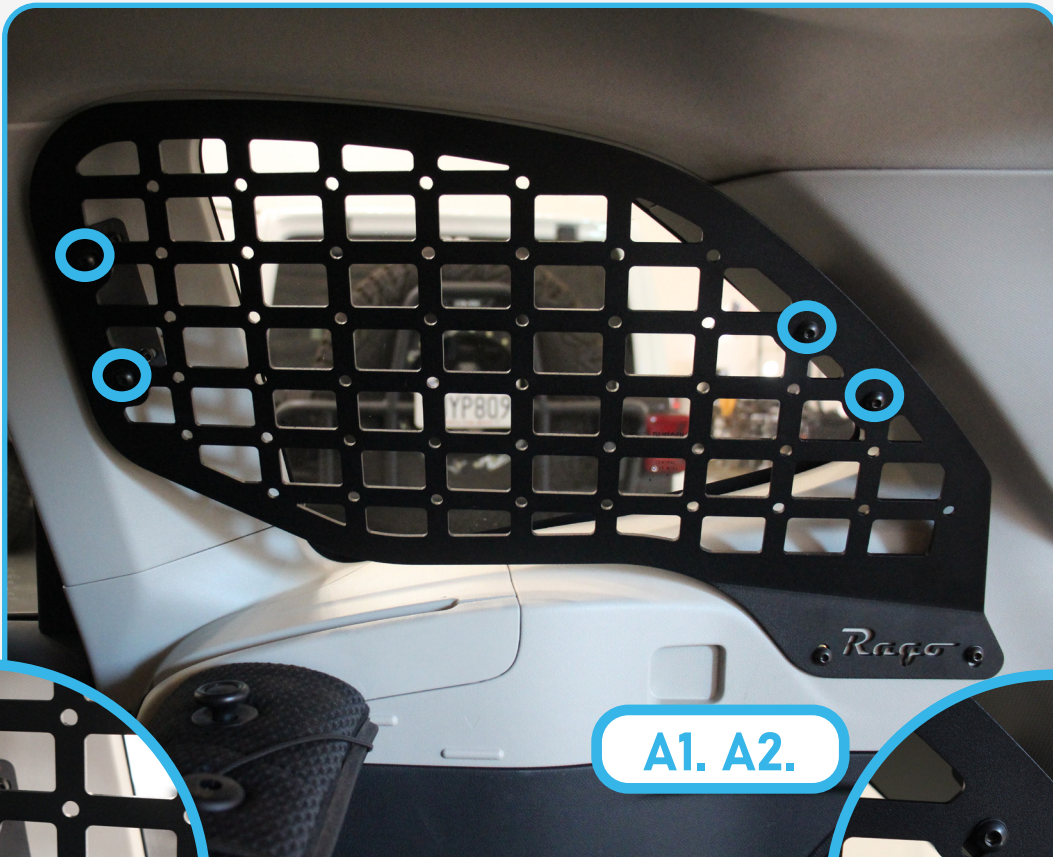
STEP 7

Mount the mounting brackets to the to the plastic with the provided 1/4" hardware (A, A2) using a (5/32 allen).

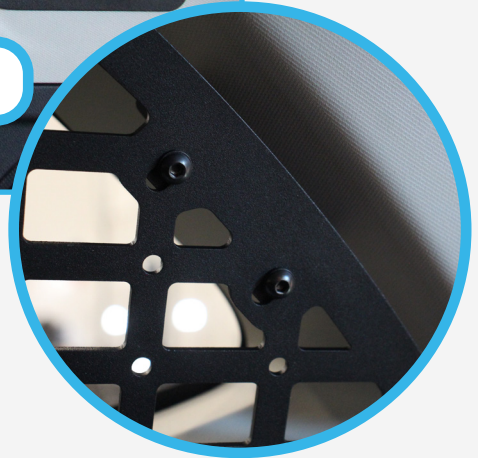


STEP 8

Mount the rear MSP with the provided **(A1, A2)** 1/4" hardware using a **(5/32 allen)**.



A1. A2.



STEP 9

Stand back and enjoy your new RAGO Rear MSP.

Check and re-tighten all mounting bolts after 100 miles and periodically thereafter.

